

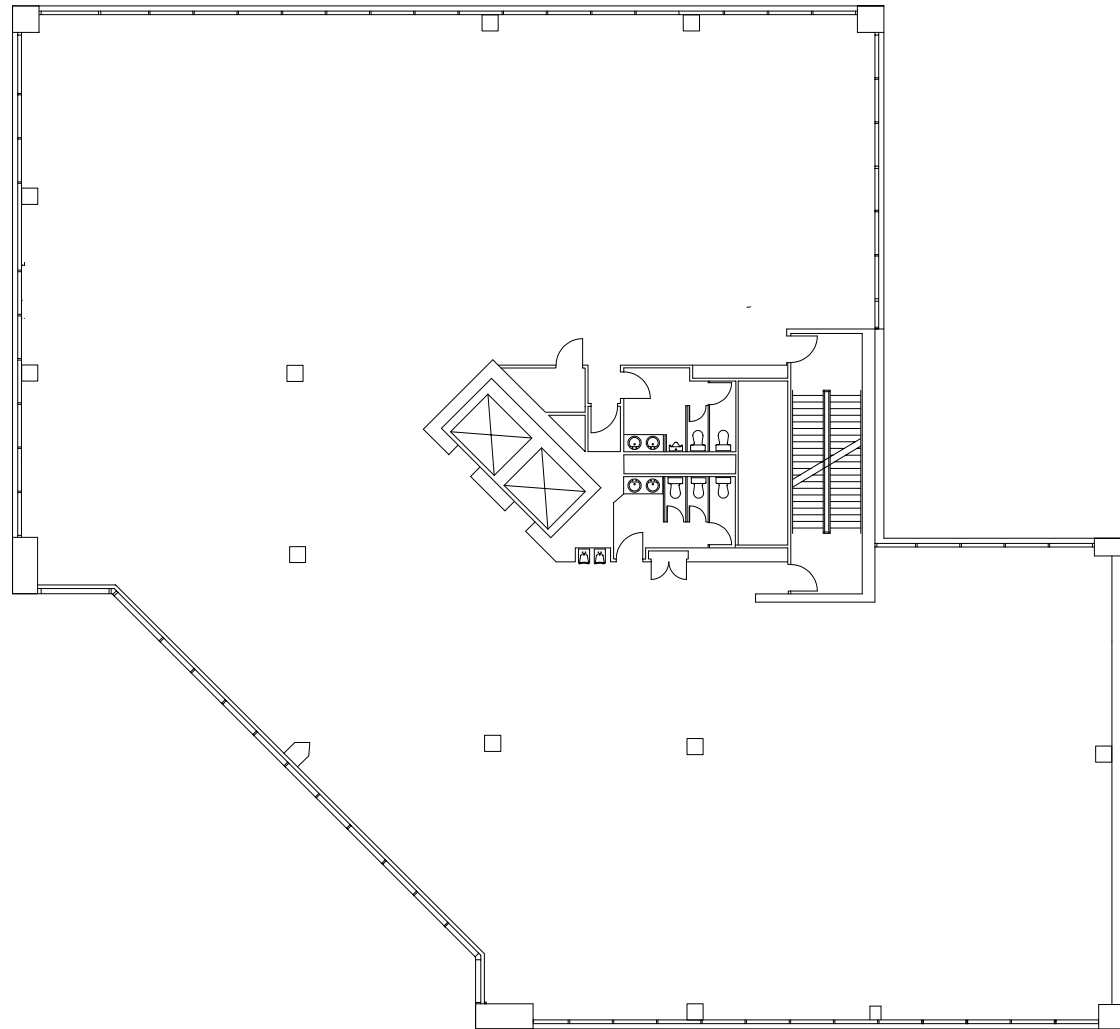
# JP PLAZA

AT 16TH & BLAKE

SUITE 200  
11,517 RSF

## SPACE FEATURES

Full floor opportunity in LoDo  
White-boxed and ready for TI



**JAMES ROUPP**  
+1 303 217 7947  
james.roupp@jll.com

**BO PITTO**  
+1 303 260 6529  
bo.pitto@jll.com

**MADDY STEVENSON**  
+1 303 542 1514  
maddy.stevenson@jll.com

Although information has been obtained from sources deemed reliable, JLL does not make any guarantees, warranties or representations, express or implied, as to the completeness or accuracy as to the information contained herein. Any projections, opinions, assumptions or estimates used are for example only. There may be differences between projected and actual results, and those differences may be material. JLL does not accept any liability for any loss or damage suffered by any party resulting from reliance on this information. If the recipient of this information has signed a confidentiality agreement with JLL regarding this matter, this information is subject to the terms of that agreement.  
©2024 Jones Lang LaSalle Brokerage, Inc. All rights reserved.



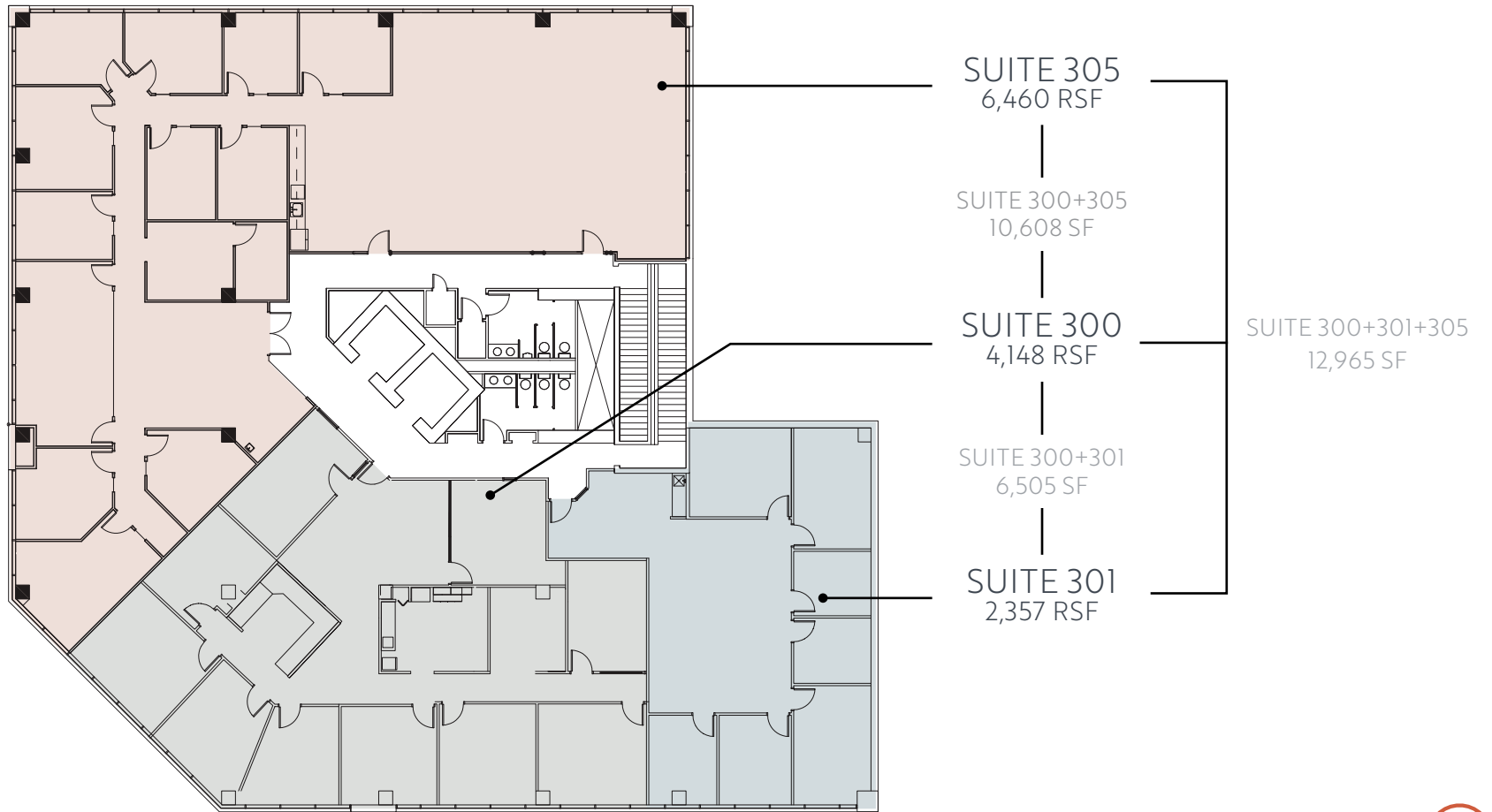
Jordan Perlmutter & Co.



# JP PLAZA

AT 16TH & BLAKE

3<sup>RD</sup> FLOOR  
2,357 - 12,965 RSF



**JAMES ROUPP**  
+1 303 217 7947  
james.roupp@jll.com

**BO PITTO**  
+1 303 260 6529  
bo.pitto@jll.com

**MADDY STEVENSON**  
+1 303 542 1514  
maddy.stevenson@jll.com



Jordan Perlmutter & Co.



Although information has been obtained from sources deemed reliable, JLL does not make any guarantees, warranties or representations, express or implied, as to the completeness or accuracy as to the information contained herein. Any projections, opinions, assumptions or estimates used are for example only. There may be differences between projected and actual results, and those differences may be material. JLL does not accept any liability for any loss or damage suffered by any party resulting from reliance on this information. If the recipient of this information has signed a confidentiality agreement with JLL regarding this matter, this information is subject to the terms of that agreement.  
©2024 Jones Lang LaSalle Brokerage, Inc. All rights reserved.

# JP PLAZA

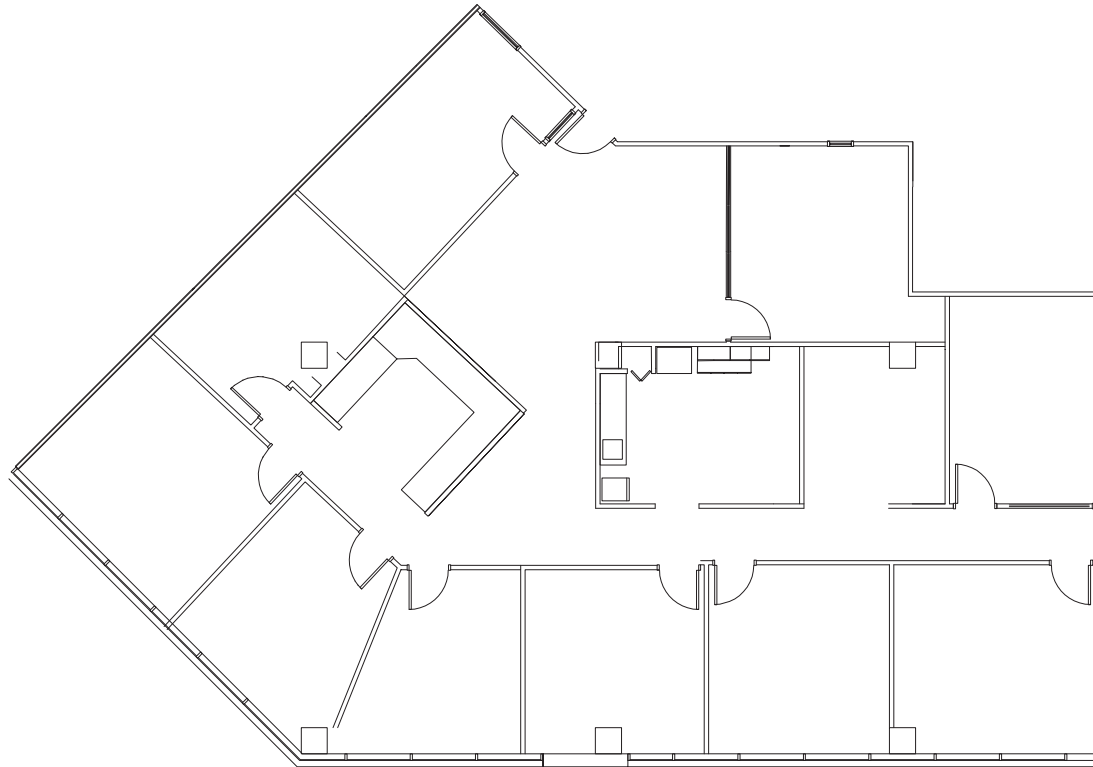
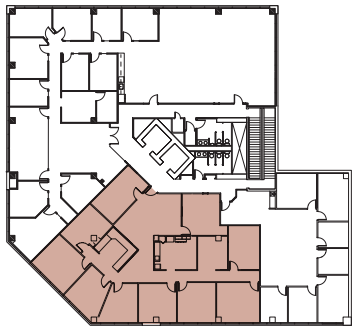
AT 16TH & BLAKE

SUITE 300  
4,148 RSF

## SPACE FEATURES

Elevator ID  
1 conference room  
7 offices  
Kitchen  
Work/storage room  
IT closet

## KEY



**JAMES ROUPP**  
+1 303 217 7947  
james.roupp@jll.com

**BO PITTO**  
+1 303 260 6529  
bo.pitto@jll.com

**MADDY STEVENSON**  
+1 303 542 1514  
maddy.stevenson@jll.com

Although information has been obtained from sources deemed reliable, JLL does not make any guarantees, warranties or representations, express or implied, as to the completeness or accuracy as to the information contained herein. Any projections, opinions, assumptions or estimates used are for example only. There may be differences between projected and actual results, and those differences may be material. JLL does not accept any liability for any loss or damage suffered by any party resulting from reliance on this information. If the recipient of this information has signed a confidentiality agreement with JLL regarding this matter, this information is subject to the terms of that agreement.  
©2024 Jones Lang LaSalle Brokerage, Inc. All rights reserved.



Jordan Perlmutter & Co.



# JP PLAZA

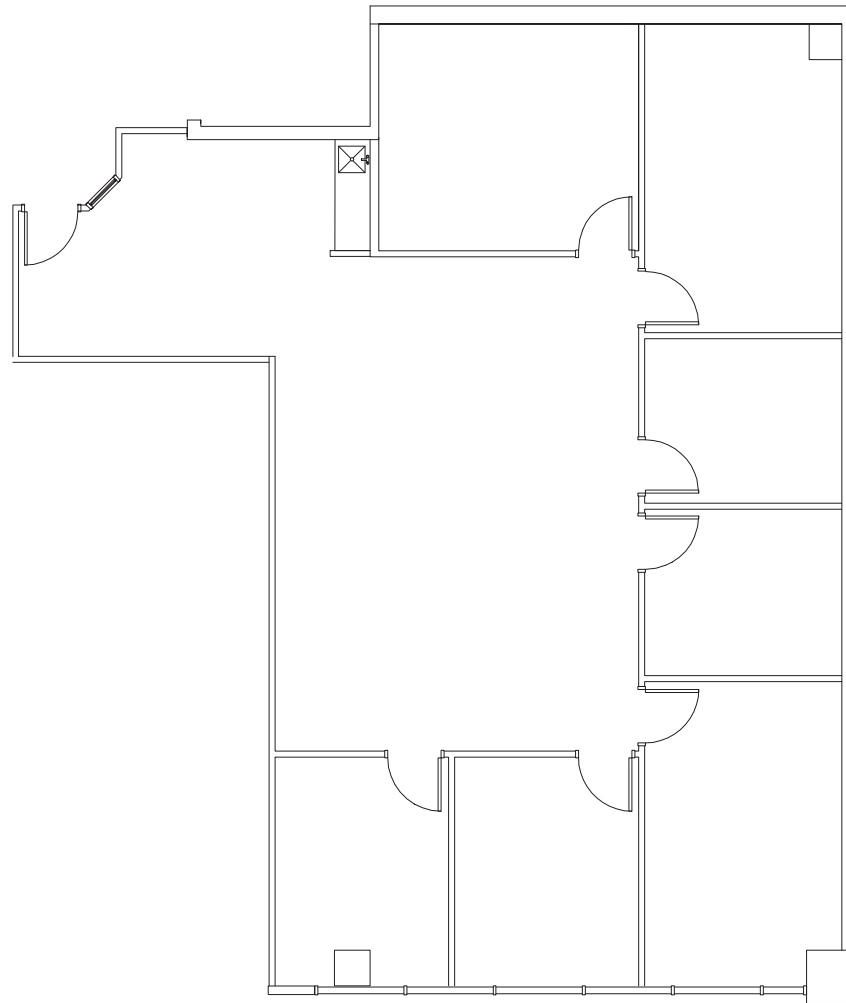
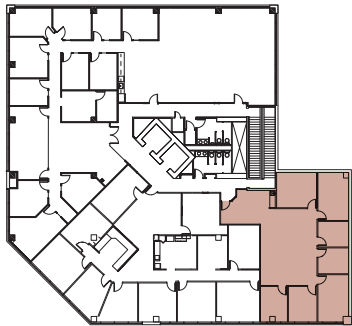
AT 16TH & BLAKE

SUITE 301  
2,357 RSF

## SPACE FEATURES

Furnished Spec Suite  
1 conference room  
1 huddle room  
5 offices  
Kitchenette

## KEY



**JAMES ROUPP**  
+1 303 217 7947  
james.roupp@jll.com

**BO PITTO**  
+1 303 260 6529  
bo.pitto@jll.com

**MADDY STEVENSON**  
+1 303 542 1514  
maddy.stevenson@jll.com

Although information has been obtained from sources deemed reliable, JLL does not make any guarantees, warranties or representations, express or implied, as to the completeness or accuracy as to the information contained herein. Any projections, opinions, assumptions or estimates used are for example only. There may be differences between projected and actual results, and those differences may be material. JLL does not accept any liability for any loss or damage suffered by any party resulting from reliance on this information. If the recipient of this information has signed a confidentiality agreement with JLL regarding this matter, this information is subject to the terms of that agreement.  
©2024 Jones Lang LaSalle Brokerage, Inc. All rights reserved.



Jordan Perlmutter & Co.



# JP PLAZA

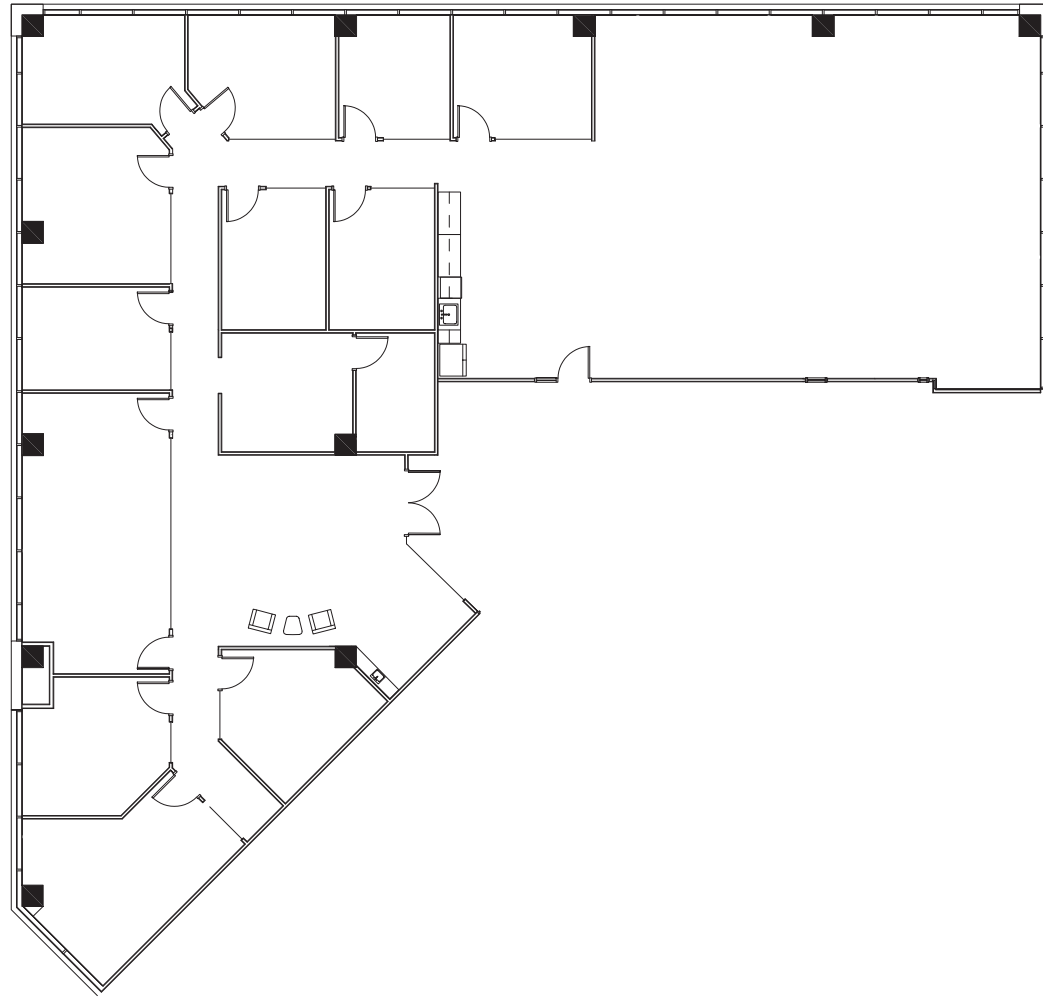
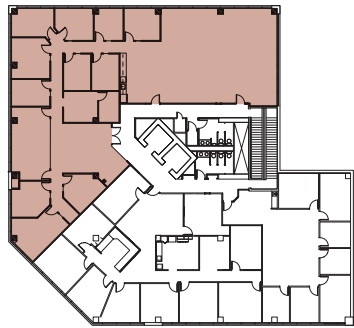
AT 16TH & BLAKE

SUITE 305  
6,460 RSF

## SPACE FEATURES

Spec Suite  
Elevator ID  
1 conference room  
1 huddle room  
10 offices  
Kitchen  
Work room  
IT closet  
Open area for workstations

## KEY



**JAMES ROUPP**  
+1 303 217 7947  
james.roupp@jll.com

**BO PITTO**  
+1 303 260 6529  
bo.pitto@jll.com

**MADDY STEVENSON**  
+1 303 542 1514  
maddy.stevenson@jll.com

Although information has been obtained from sources deemed reliable, JLL does not make any guarantees, warranties or representations, express or implied, as to the completeness or accuracy as to the information contained herein. Any projections, opinions, assumptions or estimates used are for example only. There may be differences between projected and actual results, and those differences may be material. JLL does not accept any liability for any loss or damage suffered by any party resulting from reliance on this information. If the recipient of this information has signed a confidentiality agreement with JLL regarding this matter, this information is subject to the terms of that agreement.  
©2024 Jones Lang LaSalle Brokerage, Inc. All rights reserved.



Jordan Perlmutter & Co.



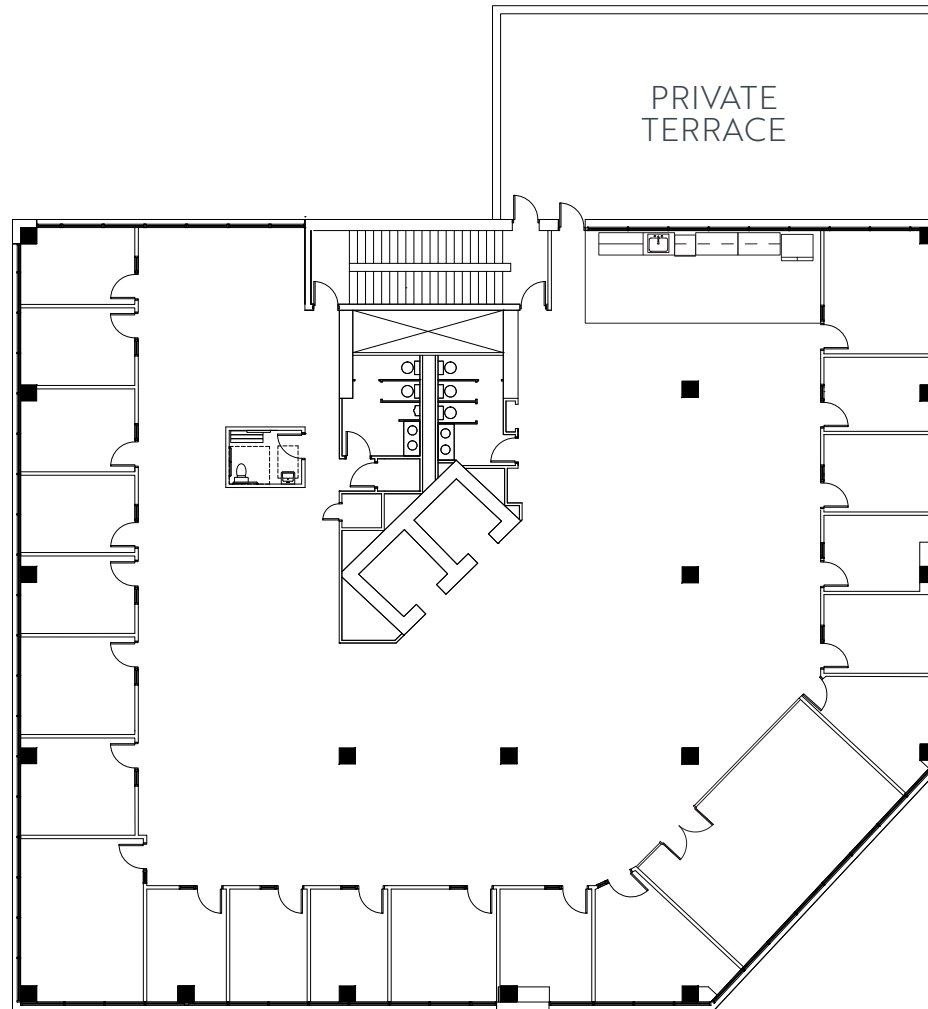
# JP PLAZA

AT 16TH & BLAKE

SUITE 400 | HYPOTHETICAL  
12,854 RSF

## SPACE FEATURES

- Full floor opportunity in LoDo
- Hypothetical perimeter office plan
- 1 conference room
- 2 huddle rooms
- 18 offices
- Kitchen
- Open area for workstations
- Private terrace



**JAMES ROUPP**  
+1 303 217 7947  
james.roupp@jll.com

**BO PITTO**  
+1 303 260 6529  
bo.pitto@jll.com

**MADDY STEVENSON**  
+1 303 542 1514  
maddy.stevenson@jll.com

Although information has been obtained from sources deemed reliable, JLL does not make any guarantees, warranties or representations, express or implied, as to the completeness or accuracy as to the information contained herein. Any projections, opinions, assumptions or estimates used are for example only. There may be differences between projected and actual results, and those differences may be material. JLL does not accept any liability for any loss or damage suffered by any party resulting from reliance on this information. If the recipient of this information has signed a confidentiality agreement with JLL regarding this matter, this information is subject to the terms of that agreement.  
©2024 Jones Lang LaSalle Brokerage, Inc. All rights reserved.



Jordan Perlmutter & Co.



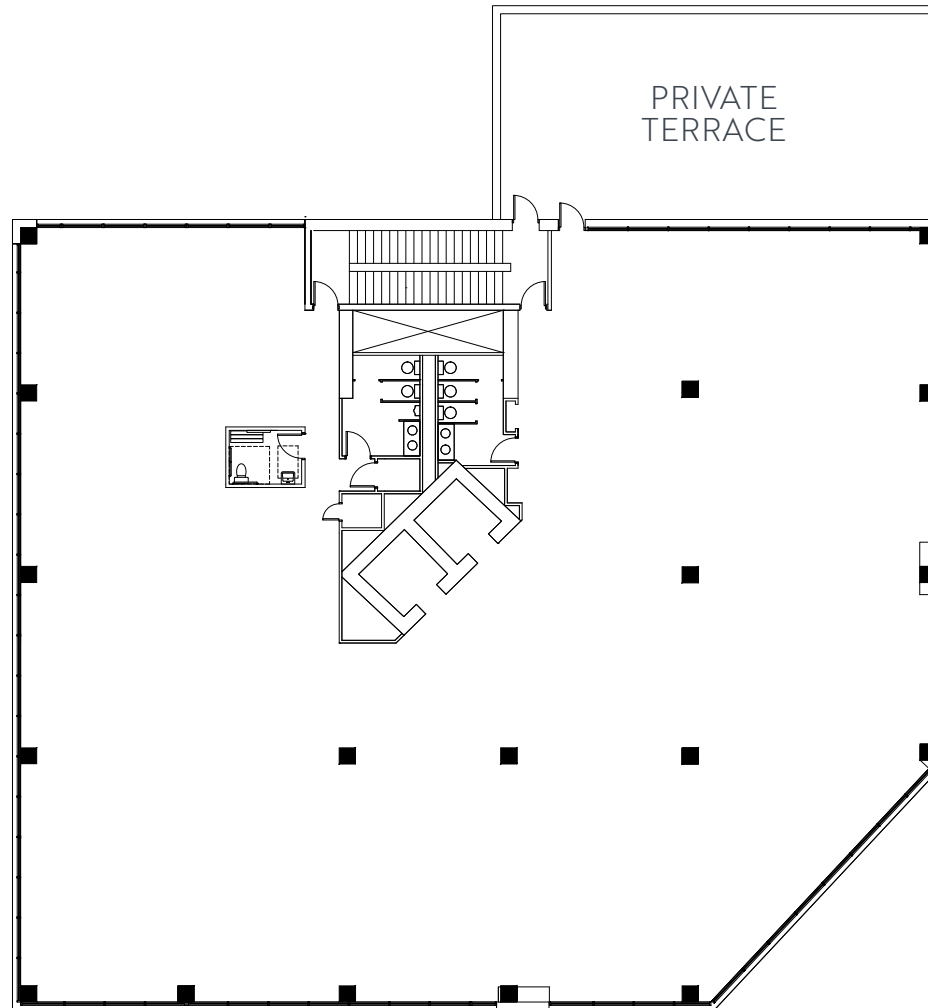
# JP PLAZA

AT 16TH & BLAKE

SUITE 400 | WHITEBOX  
12,854 RSF

## SPACE FEATURES

Full floor opportunity in LoDo  
White-boxed and ready for TI  
Private terrace



**JAMES ROUPP**  
+1 303 217 7947  
james.roupp@jll.com

**BO PITTO**  
+1 303 260 6529  
bo.pitto@jll.com

**MADDY STEVENSON**  
+1 303 542 1514  
maddy.stevenson@jll.com

Although information has been obtained from sources deemed reliable, JLL does not make any guarantees, warranties or representations, express or implied, as to the completeness or accuracy as to the information contained herein. Any projections, opinions, assumptions or estimates used are for example only. There may be differences between projected and actual results, and those differences may be material. JLL does not accept any liability for any loss or damage suffered by any party resulting from reliance on this information. If the recipient of this information has signed a confidentiality agreement with JLL regarding this matter, this information is subject to the terms of that agreement.  
©2024 Jones Lang LaSalle Brokerage, Inc. All rights reserved.



Jordan Perlmutter & Co.



# JP PLAZA

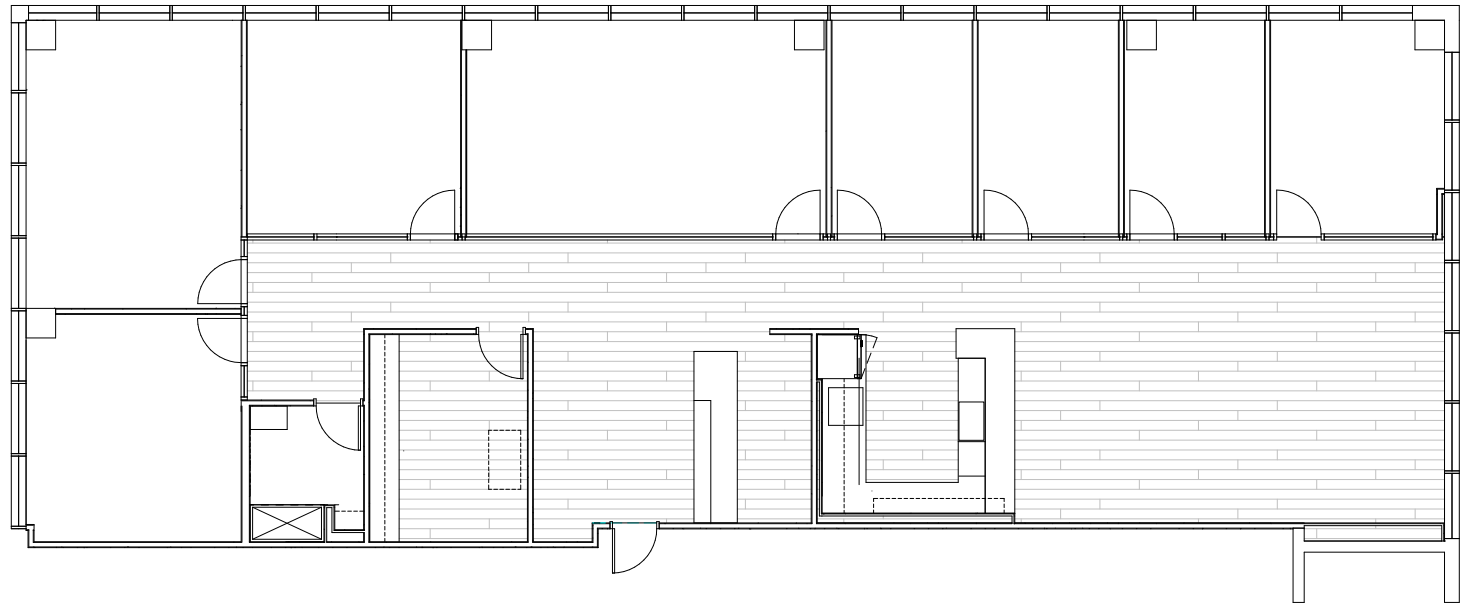
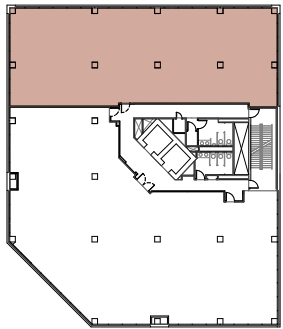
AT 16TH & BLAKE

SUITE 650  
4,357 RSF

## SPACE FEATURES

New Spec Suite  
7 offices  
Conference room  
Small bullpen  
Open kitchen  
Private shower  
Copy/storage room

## KEY



**JAMES ROUPP**  
+1 303 217 7947  
james.roupp@jll.com

**BO PITTO**  
+1 303 260 6529  
bo.pitto@jll.com

**MADDY STEVENSON**  
+1 303 542 1514  
maddy.stevenson@jll.com

Although information has been obtained from sources deemed reliable, JLL does not make any guarantees, warranties or representations, express or implied, as to the completeness or accuracy as to the information contained herein. Any projections, opinions, assumptions or estimates used are for example only. There may be differences between projected and actual results, and those differences may be material. JLL does not accept any liability for any loss or damage suffered by any party resulting from reliance on this information. If the recipient of this information has signed a confidentiality agreement with JLL regarding this matter, this information is subject to the terms of that agreement.  
©2024 Jones Lang LaSalle Brokerage, Inc. All rights reserved.



Jordan Perlmutter & Co.

